

## LOW PRESSURE GAUGE WITH ALUMINIUM CASE MODEL : P430 SERIES

**WISE**<sup>®</sup>

### SERVICE INTENDED

The P430 Series are designed to measure low pressure or vacuum or compound pressure. These models have a stainless steel 316L measuring element which consists of two formed diaphragms which have been welded together.

### NORMAL DIAMETER

100 and 150mm

### ACCURACY

±1.5% of Full Scale

### SCALE RANGE (kPa, mbar)

-3.0 ~ 0 to -2 ~ 0kPa

-15 ~ 15 to -1 ~ 1kPa

0 ~ 2 to 0 ~ 35kPa

### WORKING PRESSURE

Steady : 75% of Full Scale

Over Range Protection : 130% of Full Scale

### WORKING TEMPERATURE

Ambient : -20 ~ 65°C

Fluid : -20 ~ 80°C



## Standard Features

### PRESSURE CONNECTION

Stainless Steel (316SS)

### ELEMENT

Stainless Steel (316LSS)

### CASE

Black Finished Aluminium

### COVER

Black Finished Aluminium

### WINDOW

Glass

### MOVEMENT

Brass

### DIAL

White Aluminium with  
Black Graduations

### POINTER

Aluminium alloy, Black painted

### CONNECTION

3/8", 1/2" PT, NPT & PF

ORDERING INFORMATION

BASE MODEL PRESSURE

**P430** : LOW PRESSURE GAUGE WITH ALUMINIUM CASE

NOMINAL DIAMETER

- 4 : 100mm
- 6 : 150mm

MOUNTING TYPE (Refer to Mounting type & Dimension)

- A : Bottom Connection, Direct
- B : Bottom Connection, Surface, Case Mounting Plate
- F : Center Back Connection, Direct, Not available with diameter 150mm.
- J : Center Back Connection, Flush, Cover Mounting Plate, Not available with diameter 150mm.

ACCURACY

- 4 : ±1.5% of Full Scale

PROCESS CONNECTION

- D : 3/8"
- E : 1/2"

CONNECTION TYPE

- B : PF
- C : PT
- D : NPT

UNIT

- J : kPa
- S : mbar

RANGE

Refer to Pressure Unit & Range Table

PRESSURE CONNECTION  
MAT'L AND DIALS COLOR

- 3 : 316SS & 2 Colors

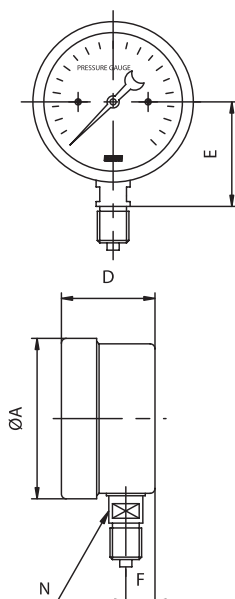
OPTIONS

- 0 : None
- 1 : Accessories

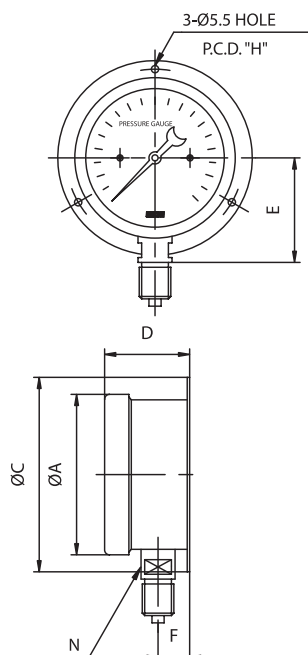
P430	4	A	4	E	C	J	120	1	0	SAMPLE MODEL NUMBER
------	---	---	---	---	---	---	-----	---	---	---------------------------

# P430 : TYPE OF MOUNTING

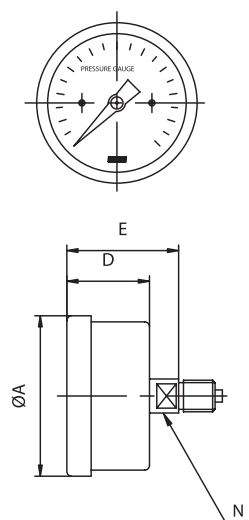
CODE A



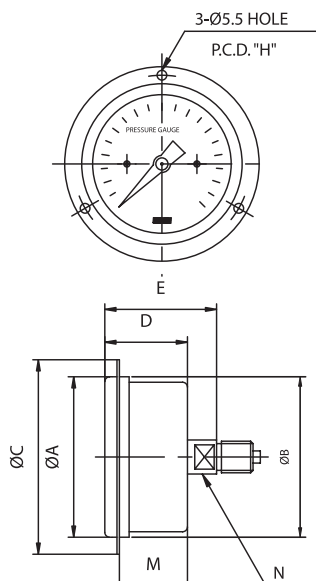
CODE B



CODE F



CODE J



Dimensions (mm)

DIAL SIZE	AVAILABLE CODE	A	B	C	D	E	F	H	M	N
100	A,B	110		130	63	80	26	118		17
	F, J	110	110	136	63	79		120	55	17
150	A,B	172		182	65	116	27	172		17

**PRESSURE UNIT & RANGE TABLE**

RANGE & CODE	UNIT & CODE		NOMINAL DIAMETER	
	S : mbar	J : kPa	100mm	150mm
001	-300~0	-30~0	○	○
103	-250~0	-25~0	○	○
002	-200~0	-20~0	○	○
003	-150~0	-15~0	○	○
004	-100~0	-10~0	○	○
006	-50~0	-5~0	○	○
007	-40~0	-4~0	○	○
008	-30~0	-3~0	○	○
009	-20~0	-2~0	○	○
073	-150~150	-15~15	○	○
071	-100~100	-10~10	○	○
014	-50~50	-5~5	○	○
016	-40~40	-4~4	○	○
018	-30~30	-3~3	○	○
019	-25~25	-2,5~2,5	○	○
020	-20~20	-2~2	○	○
022	-10~10	-1~1	○	○
061	0~20	0~2	○	○
063	0~30	0~3	○	○
065	0~40	0~4	○	○
066	0~50	0~5	○	○
070	0~100	0~10	○	○
116	0~150	0~15	○	○
117	0~200	0~20	○	○
118	0~250	0~25	○	○
119	0~300	0~30	○	○
120	0~350	0~35	○	○

○ : AVAILABLE × : NOT AVAILABLE