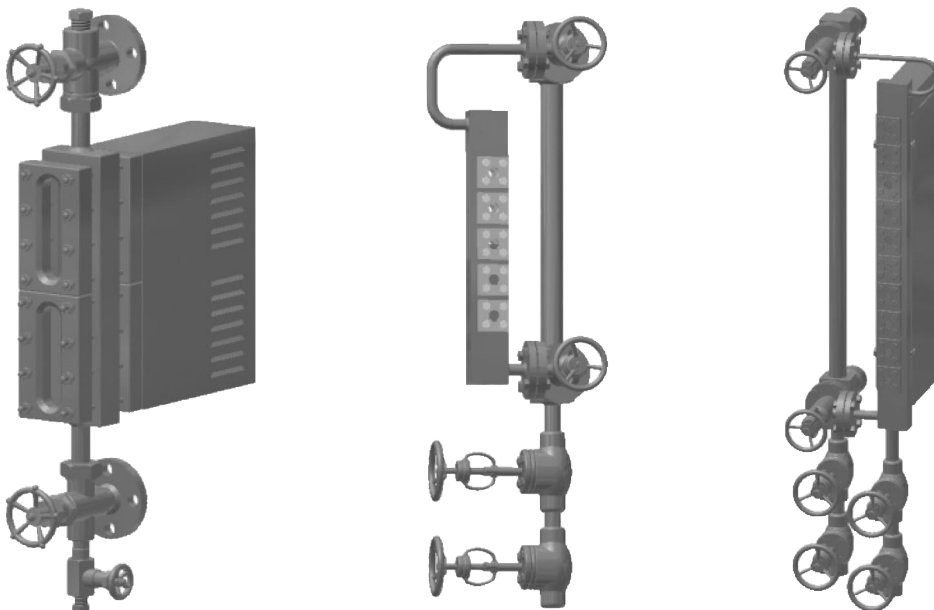


## TWO - COLOR TYPE LEVEL GAUGE MODEL : L500, L510 SERIES

**WISE**<sup>®</sup>



### Features of Two Colors Water Level Gauge

**1. Distinct water level -**

The water level is markedly distinct and confirmed from far distance since an illuminator is fitted at the rear of water level gauge by which visible surface is separated into two section, one is red-steam space, and another green-boiler water.

**2. Correct water level is indicated -**

As the Two-Color separation is based on the principle of optical science, normal water level can be indicated always even in an instantaneous variance of water level.

**3. Remote observation possible -**

The water level appeared on the visible surface can be transferred to the operation (control) room by fitting several reflex mirrors (to the most convenient place for an operator to watch).

As the most improved method, television observation is utilized, therefore, we have also researched and developed those water level gauges suitable for television observation and obtained good experimental results by changing filter glass of two colors (red and green) and employed in great numbers.

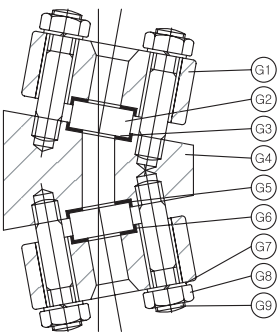
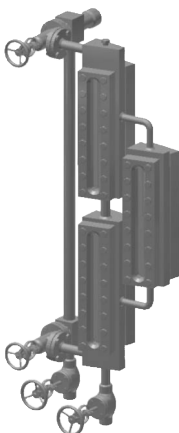
TRANSPARENT & TWO - COLOR TYPE LEVEL GAUGE  
MODEL : L500 SERIES

**WISE**<sup>®</sup>

DESCRIPTION

Body of the two color type gauges are V shaped on it's angle, as you see in the following cross sectional view, in order split light from illuminator (installed behind the gauge) into two colors which are green and red. The cover plates of these models are all provided with rib reinforcement.

MODEL



- G1. COVER PLATE**  
**G2. GAUGE GLASS**  
**G3. MICA GASKET**  
**G4. GAUGE BODY**  
**G5. SEALING GASKET**
- G6. CUSHION GASKET**  
**G7. WASHER**  
**G8. NUT**  
**G9. BOLT**

SPECIFICATIONS

**SIZE OF GLASS** - NO.6 ~ NO.9  
**MAX. PRESSURE** - 14.6MPa  
**MAX. TEMPERATURE** - SAT. TEMPERATURE.

DIMENSIONS

Model	Side of Gauge mounting against boiler drum		Direction of Gauge Front	Dimmensions				
	Left-Hand	Right-Hand		No.	H	ℓ <sub>1</sub>	ℓ <sub>2</sub>	V. L
L500			Front only	No. 6	510	195	315	225
				No. 7	530	200	330	255
				No. 8	570	220	350	295
				No. 9	590	230	360	315
L500			Free choice	No. 6	540	270	270	225
				No. 7	570	285	285	255
				No. 8	610	305	305	295
				No. 9	630	315	315	315

Unit : mm

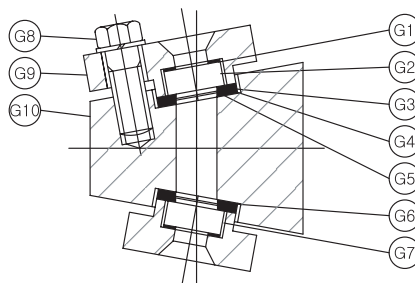
## TWO - COLOR MULTI - PORT TYPE LEVEL GAUGES MODEL : L510 SERIES

**WISE**<sup>®</sup>

### DESCRIPTION

This multi-window two color level gauge is provided with from 5 or 7 round windows or ports and is designed to handle the pressures and temperatures higher than the single window type level gauges. Impacts from external pressure and heat are distributed to each of the ports, thereby eliminating or minimizing the glass breakage and increasing the structural durability.

### MODEL



G1. CUSHION GASKET  
G2. GAUGE GLASS  
G3. PROTECTIVE GASKET  
G4. MICA GASKET  
G5. SEALING GASKET

G6. PROTECTIVE GASKET  
G7. PACKING STRIP  
G8. HEX. BOLT  
G9. GAUGE COVER  
G10. GAUGE BODY

### SPECIFICATIONS

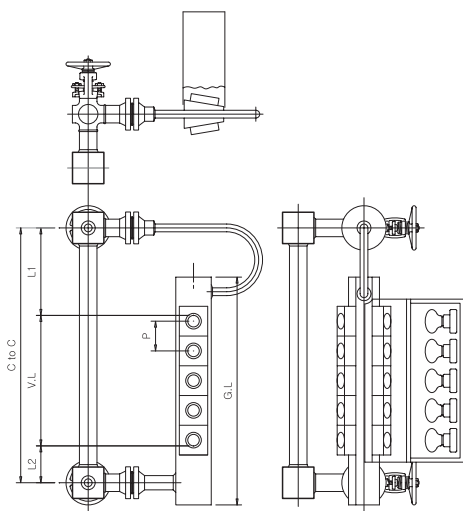
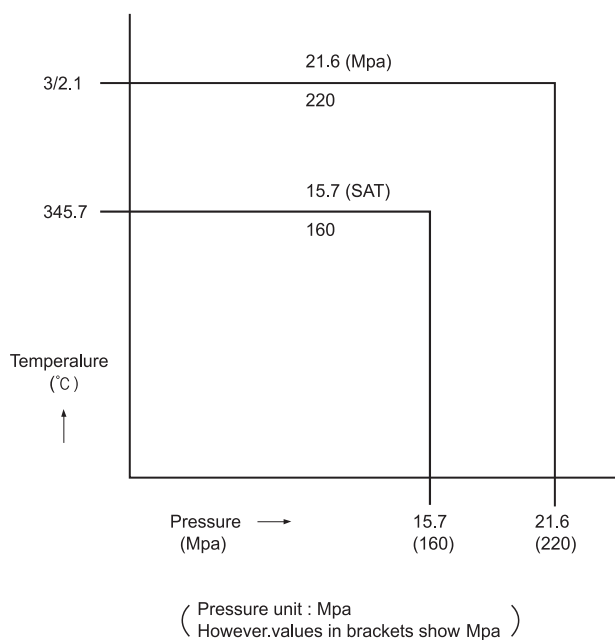
**NO OF PORTS** - NO.5 ~ NO.15

**MAX. PRESSURE** - 21.5MPa

**MAX. TEMPERATURE** - SAT. TEMPERATURE.

## PRESSURE / TEMPERATURE RATING OF L500 SERIES

**WISE**<sup>®</sup>



No. of Ports	Visual Length (VL)	Gauge Length (G.L)	Installation Length (CtoC)	L1	L2	Port Pitch (P)
5P	320	480	520	140	60	75
6P	395	555	595	140	60	75
7P	470	630	670	140	60	75
8P	545	705	745	140	60	75
9P	620	780	820	140	60	75
10P	695	855	895	140	60	75
11P	770	930	970	140	60	75
12P	845	1005	1045	140	60	75
13P	920	1080	1120	140	60	75
14P	995	1155	1195	140	60	75
15P	1070	1230	1270	140	60	75

Note : We can also manufacture items with different number of ports to the above.

## LEVEL GAUGE ORDERING INFORMATION

(Two-Color)

### Gauge Pattern

L500 : Two Color Transparent

L510 : Two Color Multi-Port

### Vessel Con'n Size

AR : 1" Socket Welding

OH : Other

### Hook-Up

TB : Top & Bottom

SL : Top & Bottom, Flanged Loop (Left)

SR : Top & Bottom, Flanged Loop (Right)

OH : Other Hook-Up

### Gage valve

SS : Maker Standards

OH : Other

### Center to Center (mm)

XXXX

### Chamber Material

A : A105

Q : Other

### ILLUMINATOR Case Material

CS : C.S

ZZ : Other

### Drain End

DP : Dust-Proof Cap Inserted

WP : With Plug

OH : Other

NO : None

L500

AR

OH

SS

XXXX

A

ZZ

NO