

General Information

HM-95 Series

Float Type Liquid
Level Switch



HITROL CO., LTD.

General

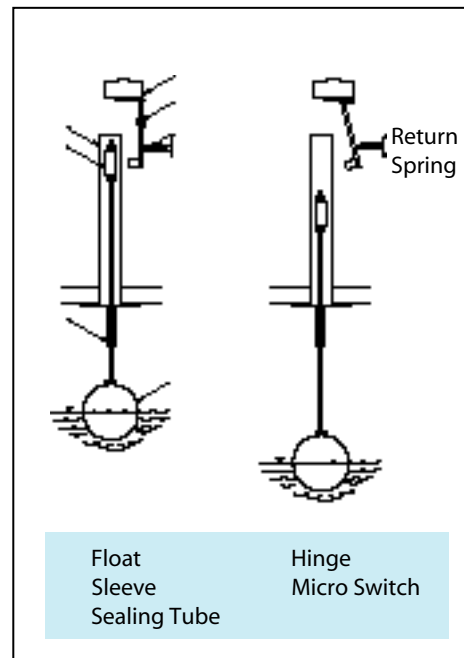
HM-95 Series L/S measures liquid level by using float transforming the change of liquid level into the float of sleeve. Since having no part which contacts fluid flowing through device or

switch compartment. HM-95 series has a high stability and good tolerance to pressure. The material of parts is corrosive-resistant stainless steel which prevents float from corrosion.

Operating Principle

The basic operating principle provides for magnetic switch action resulting from a change in liquid level, which moves a magnetic attraction sleeve into the field of an externally located magnet. This principle eliminates problems associated with flexing diaphragm seals, as well as coating problems encountered by probe devices.

The illustration indicates as the float rises, the attraction sleeve moves into the field generated by the external magnet and overcomes the force of the return spring thus actuating the switching element. As the liquid level (and the float) fall the attraction sleeve moves out of the magnetic field and the return spring pulls the magnet away from the sealing tube and deactuates the switching element.



Technical Data

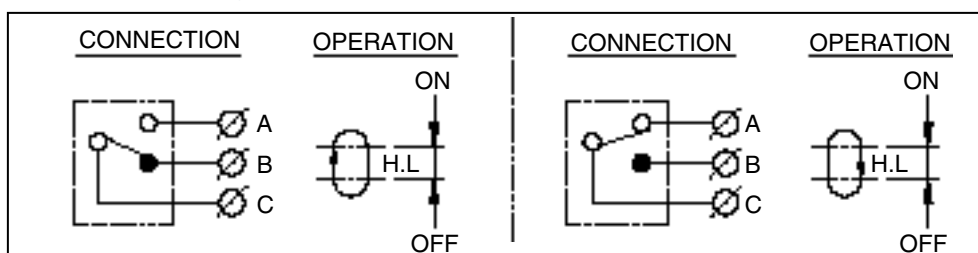
HM-95 Series STD

Mounting method	Flange
Mounting size	JIS 4 or 5 10K RF
Pressure	STD.---10 kgf/cm ²
Process temp.	STD.---120
Enclosure	Weather Proof
Conduit conn.	3/4 PF
Material	Head & Base : SS 41 + AL.C Flange : C.S Float : SUS 304

Power supply / Contact rating

Contact Rating	Head Temp.		
	~ 200	~ 300	~ 450
	AC 250 V, 15 A DC 125 V, 0.5 A	AC 250 V, 5 A DC 125 V, 0.5 A	AC 250 V, 1 A DC 125 V, 0.5 A

Connection Diagram



Being completely separated between tank and device, this is free from leakage and appropriate for measuring liquid surface in pressurized vessel.

Usable for corrosive liquid and appropriate for measuring liquid level in

various tank in the field of chemical industry.

Used in measuring the interface between two kinds of liquid having different specific gravity.

typically used for alarming liquid level.

Application

Nomally Its not necessary to maintain HM-95. However in case of missing several parts, the specific accuracy cannot be achieved Therefore we recommend that this device should be checked per 3 year period.

In case that level switch should be checked anually

1) When using liquid containing adhesive elements

2) When using level switch in the very important part such as alarming urgently.

Maintenance

Since the pressure is up to 20 kgf/cm^2 , the chamber manufactured by welding type, the connection version between chamber and level switch is screw type.

Since the pressure is low to 20 kgf/cm^2 the connection version between chamber and level switch is flange type.

In case of measuring interface between tow liquid, the differences of specific gravity must be more than 0.2

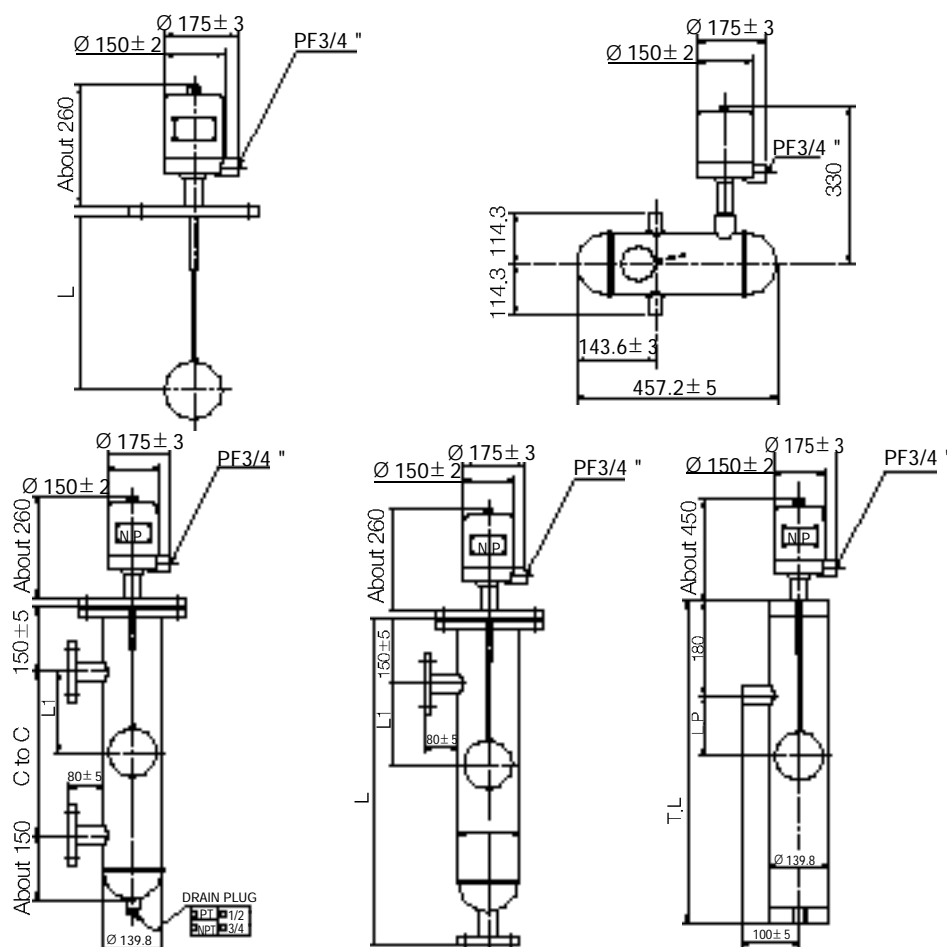
When the power is being supplied, repairing electronic components must be performed by the qualified personnel.

HM-95 must be wired according to the appropriate purpose and connection diagram,

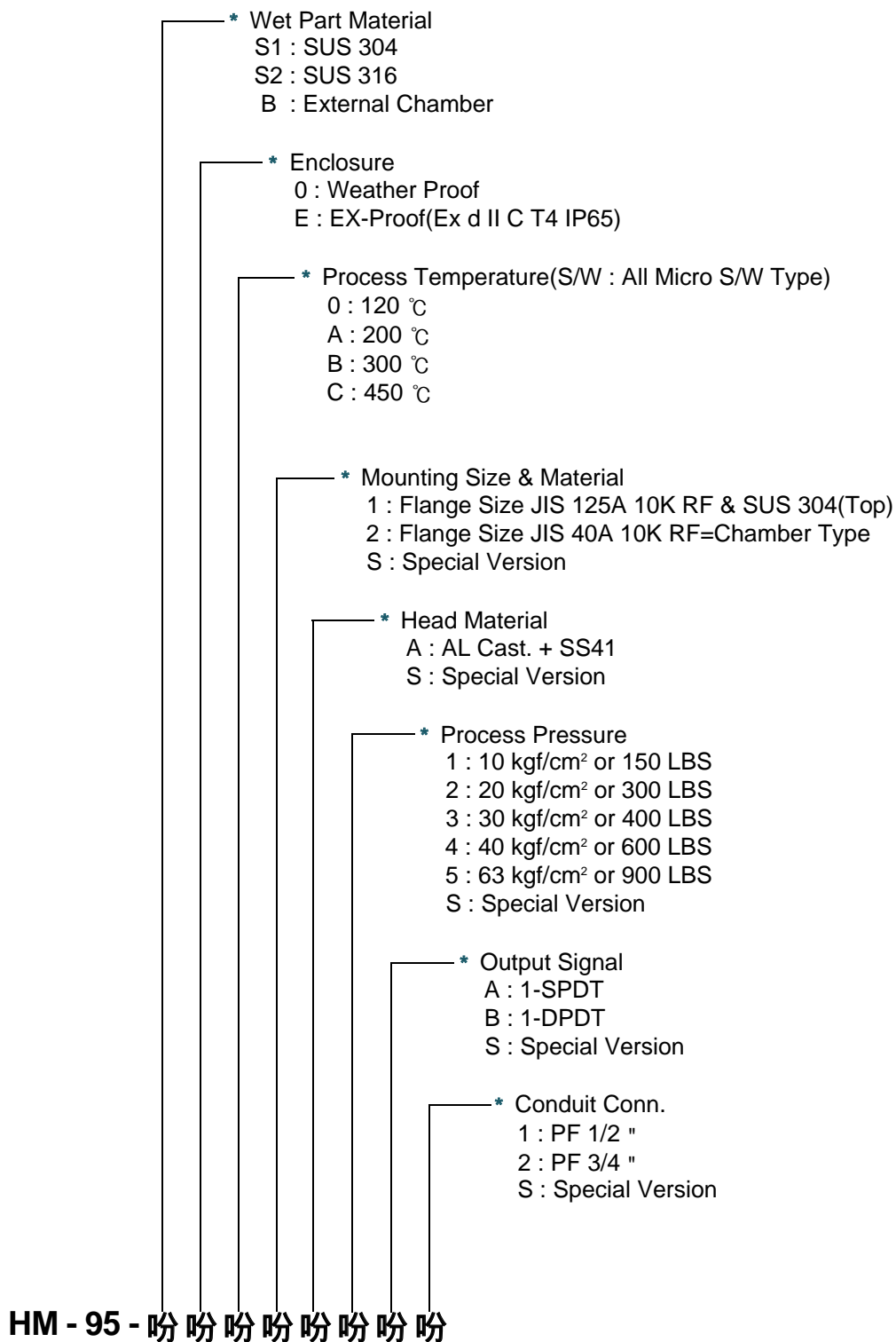
Electronic components must be installed according to the local valid regulations.

Point to be considered in selecting model

Dimensions



ORDER CODES



HITROL CO., LTD.

HEAD OFFICE· FACTORY· R & D INSTITUTE
62-182 BONGILCHEON-RI CHORI-MYUN
PAJU CITY KYUNGGI-DO KOREA
TEL : (031) 943-0875~7 (02)744-9922
FAX : (031) 943-0878, 5600
<http://www.hitrol.co.kr> hitrol@hitrol.co.kr